



onX Trip Planning Workflow

Awesome Routes and Camps

Trip Planning Workflow with onX Offroad

Planning Awesome Routes and Camps

About Adam Zolyak

- 10+ years overlanding
- Camped at 100s of dispersed campsites
- Maker: software, 3D printing, teaching, photography, videography
- Home base near Denver, CO but often somewhere in the west



Slides + Follow Our Journey

Slides + Links to Resources

go.banthaoverland.com/expoeast24

Follow along for route planning and dispersed camping tips, DIY overland gear, and our travels mixing work and play

banthaoverland.com



@banthaoverland



@banthaoverland

Rate this and other sessions in the Overland Expo app

Agenda

What are we learning today?

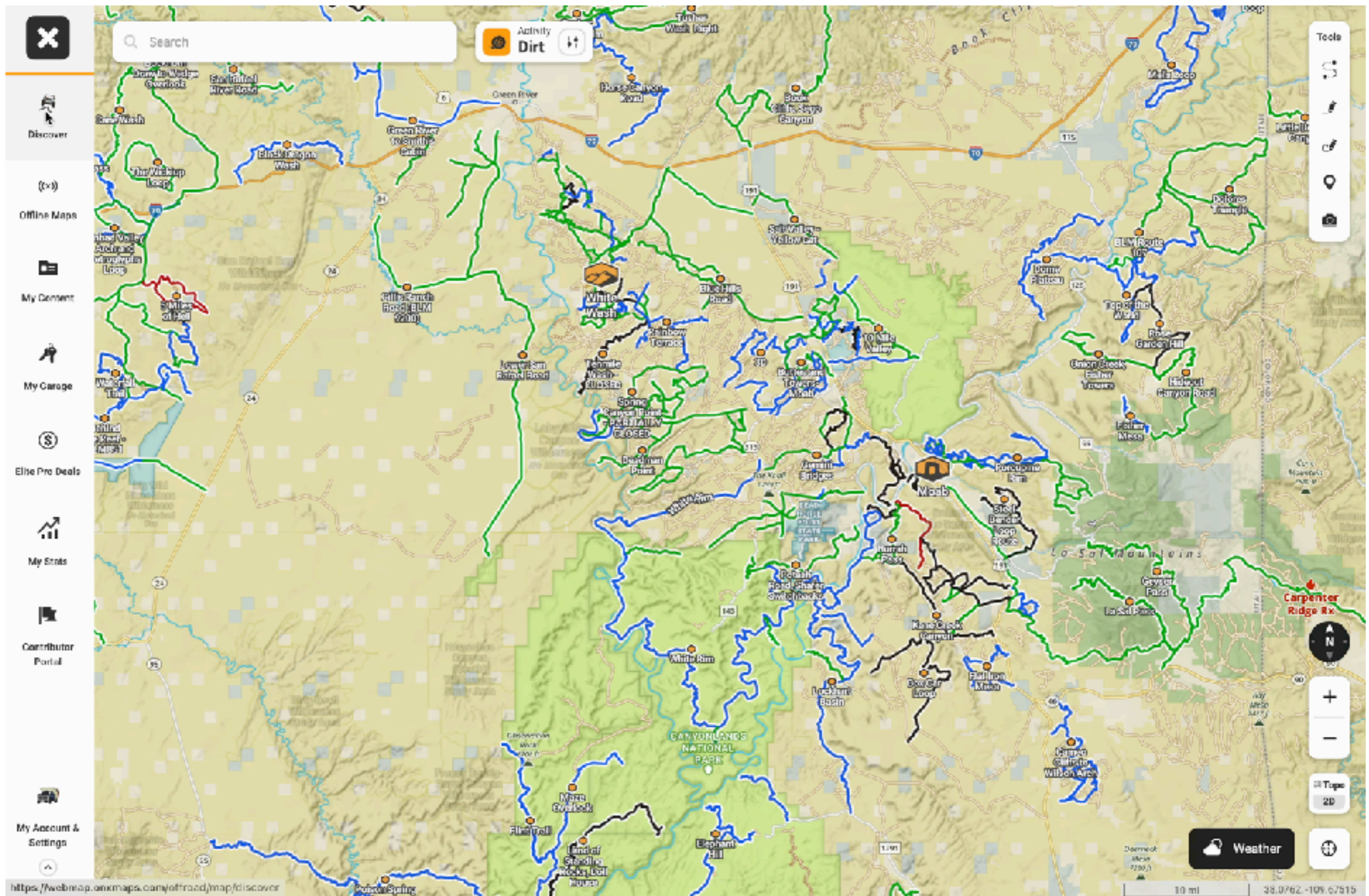
- Overview of onX Offroad
- Trip Planning Workflow
 1. Preparing
 2. Driving
 3. Camping

onX Offroad Overview

- Maps and tools for trip planning and navigation
- 650,000 miles of offroad trails
- 10,000 Guided Trails
- Web, iOS, and Android apps
- Works offline



The Basics onX Offroad Web



The Basics onX Offroad Web

White Rim

Overview Trail Reports Nearby Trails

Most Recent Trail Report See All

August 07, 2024

Open

Normal Dually Just Us

Distance: **88 mi** | High Point: **5,958 ft** | Low Point: **3,944 ft**

Difficulty: **Moderate** | Technical Rating: **5 / 10**

Total Time: **10 hrs**

Best Times: Spring, Summer, Fall

Submitted By: FunTreds

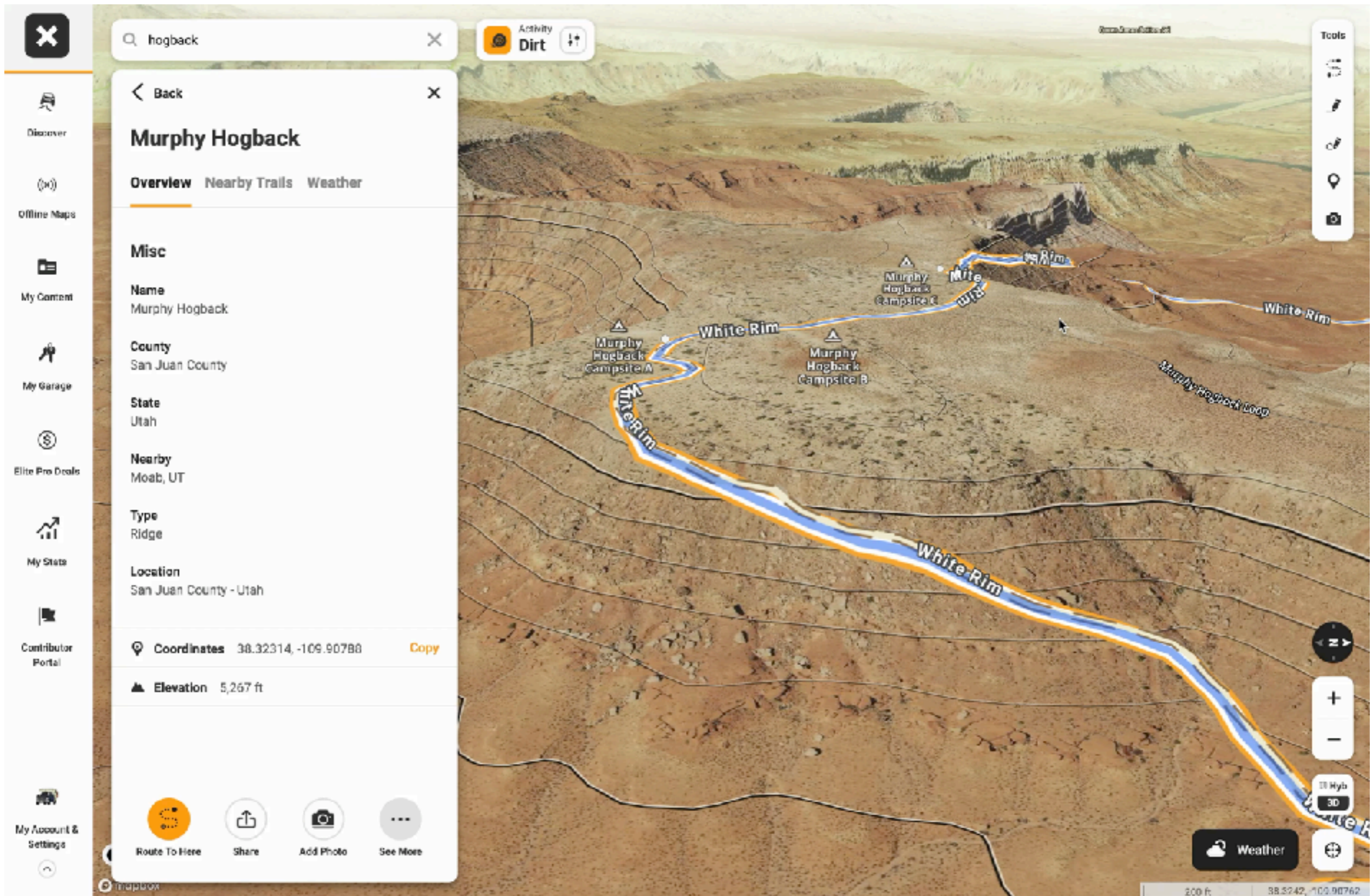
Full Width Road

Accessible By:

Route To Here Add Trail Report Share See More

Weather

The Basics onX Offroad Web



My Workflow

onX Offroad

1. Preparing
2. Driving
3. Camping



A Story



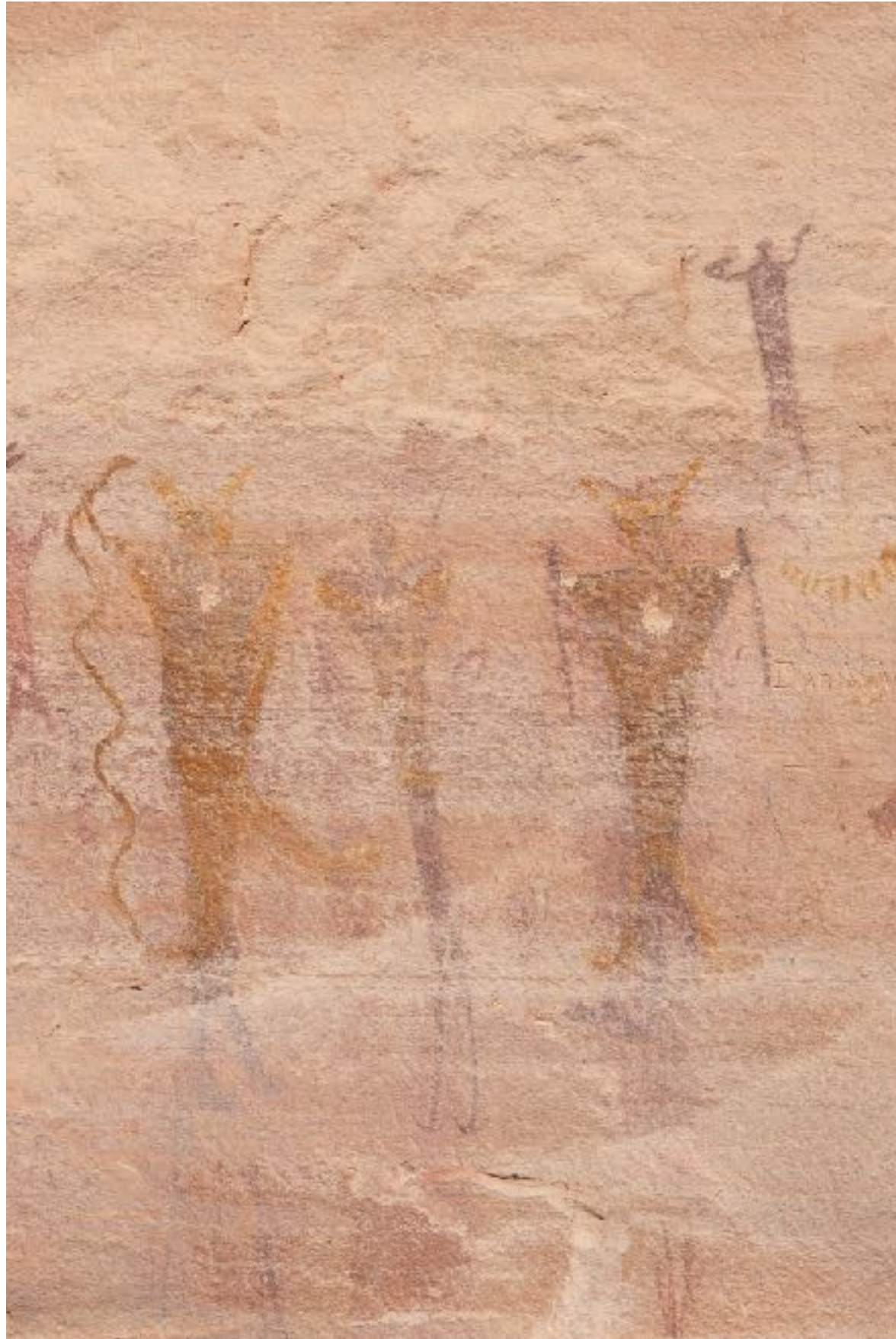
7 Days

Offroad in The San Rafael Swell, Utah



9 People, 3 Vehicles

Offroad in The San Rafael Swell, Utah





~~Planning~~

Preparing

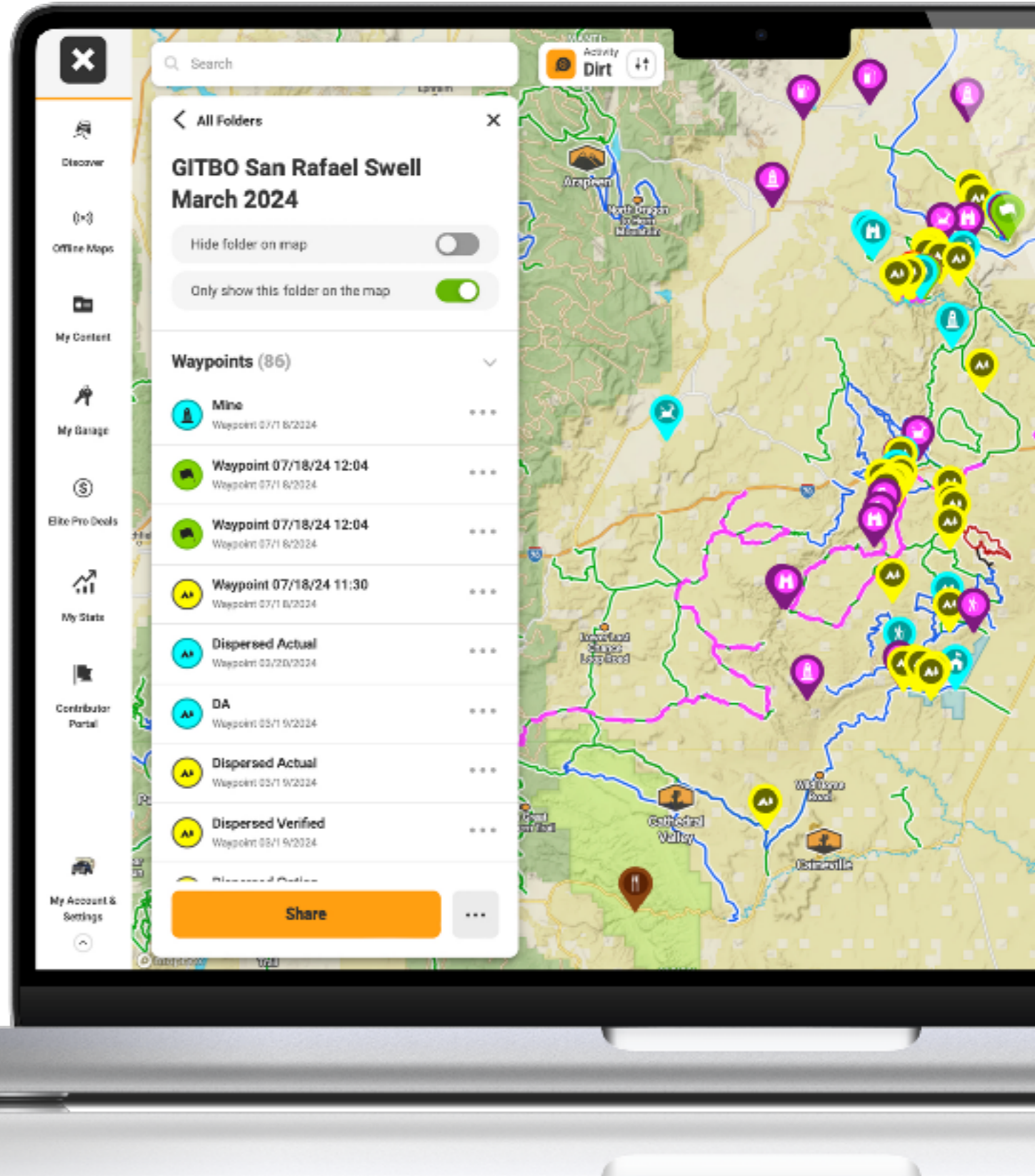
=

Ready Options

Preparing


Step 1

1. Identifying a general area or route to explore
2. Identifying and marking offroad trails
3. Identifying and marking POIs
4. Organization




Map onX Offroad Map Key

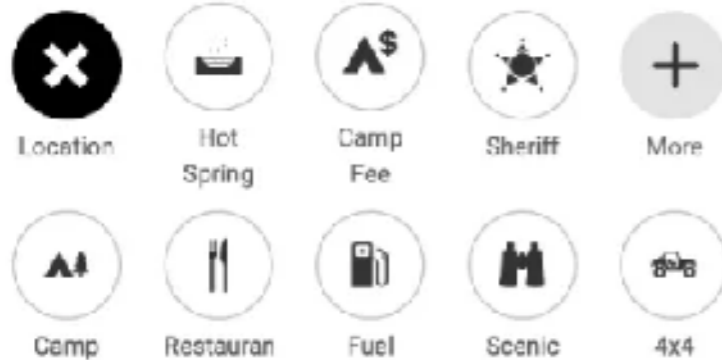
Points of Interest

 Resource - Gas, Water, ...












 Option

 Actual

 Camping



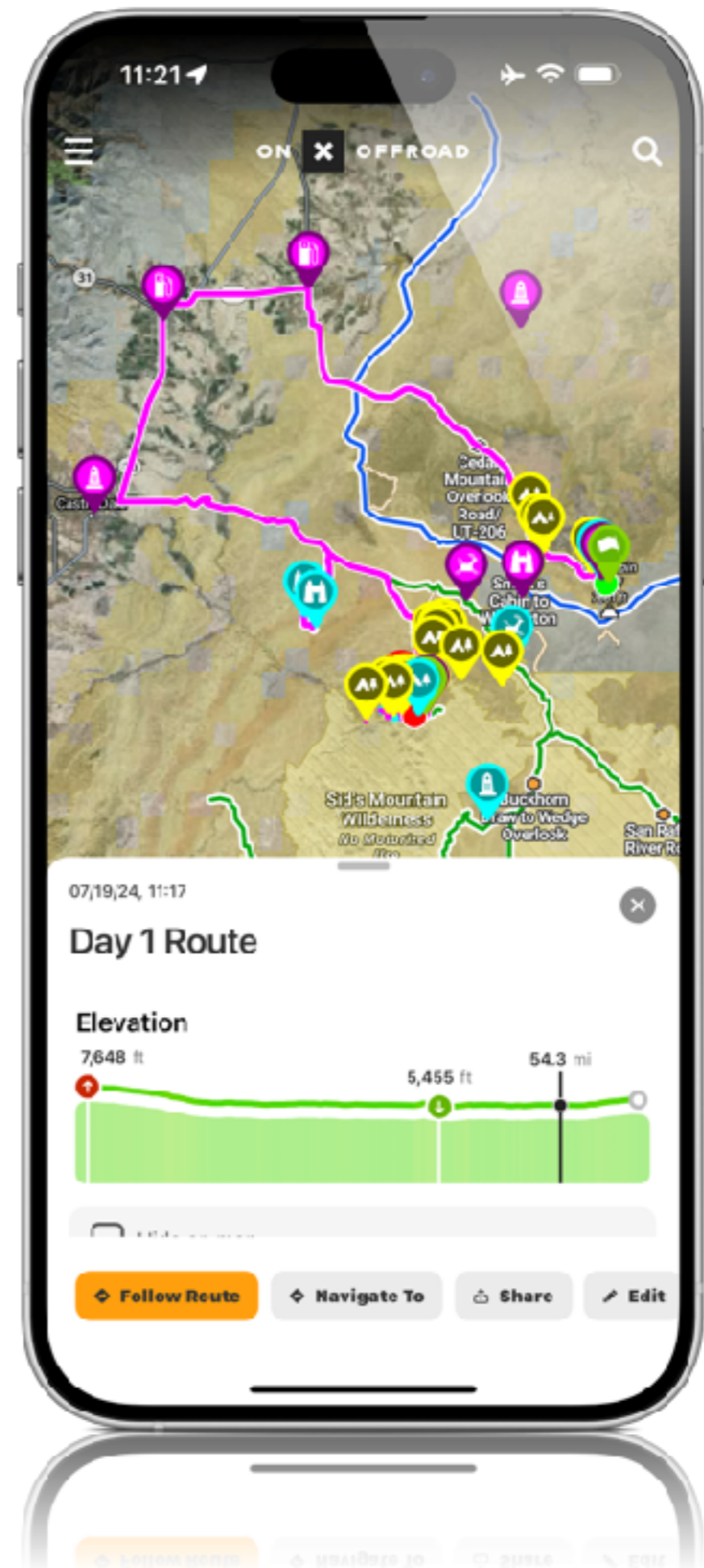
Routes

-  Easy (Guided Trail)
-  Moderate (Guided Trail)
-  Difficult (Guided Trail)
-  Extreme (Guided Trail)
-  Recording
-  Recorded Driving Track
-  Driving Trail Route (Primary)
-  Recorded Activity Track
-  Driving Trail Route (Alt)
-  Driving Trail Route (Misc)
-  Activity Track Route

Driving

Step 2

1. Navigating to the route
2. Driving along the route
3. Visiting POIs
4. Marking additional campsites





While Driving

Apple CarPlay / Android Auto

Add A POI

Commonly A Dispersed Campsite Option



Camping

Step 3

1. Scouting campsites
2. Selecting a campsite
3. Preparing for tomorrow





Trail Guide **Benefits**

Our Trail Guides go above and beyond to deliver the best quality content and up to date trail information to the off-road community. They're passionate about getting outdoors, and always looking to explore what's around the next bend, which is why we provide them with rewards in order to help them go farther.

Benefits:

- Free access to onX Offroad Elite
- Exclusive Gear
- Inside Scoop on App Development
- Partner Discounts & Elite Discounts
- Invites to Trail Guide events and gatherings
- Opportunities to Earn Cash Rewards

[Join The Trail Guides](#)

Capability Review

onX Offroad

- Maps
 - Trails (MVUM, BLM, etc)
 - Vector
 - Topo
 - Satellite
 - 3D Tilt
 - Recent Imagery
 - Wildfire, Smoke, AQI
 - Land Ownership
- Offline Maps
- Guided Trails
 - Trail Difficulty
 - Photos, Descriptions
 - Trail Reports
- Finding
 - Search
 - Discover
 - My Garage
 - Filters
- Routes
- POIs
- Import / Export
- Recording / Tracking
- 2 Finger Measure
- Organization
 - Colors
 - Icons
 - Folders
 - Sharing
- CarPlay / Android Auto
- iOS / Android Apps

Slides + Follow Our Journey

Slides + Links to Resources

go.banthaoverland.com/expoeast24

Follow along for route planning and dispersed camping tips, DIY overland gear, and our travels mixing work and play

banthaoverland.com



@banthaoverland



@banthaoverland

Rate this and other sessions in the Overland Expo app